



## Pony Club Achievement Badge Program

This program was designed to develop a sense of achievement for members working at the D-Levels. It also gives instructors another tool to teach basic knowledge of horse care and sets a foundation for certification.

Twenty-five badges are available: 15 in Horse Management, detailed in this booklet, and ten in riding skills (*separate workbook available*).

Badges should be awarded in an enjoyable arrangement for both members and instructors, allowing the members to confidently demonstrate the knowledge they have gained. It is up to the individual clubs and centers to devise a system for the awarding of badges. The aim of this program is to steer away from a "formal" atmosphere of testing and allow the members to express as much of their knowledge as possible in a hands on manner (*e.g., using a bridle to talk about its parts instead of pointing at a picture*).

This booklet outlines the objectives for each badge and provides guidance on what knowledge will be needed to achieve each badge. Items on which badges may be displayed (e.g., sweat shirts, bags, caps, etc.) are available from the Pony Club Bookstore. You may place an order for these items at [www.ponyclub.org](http://www.ponyclub.org) or call (859) 422-5522.

*Sportsmanship, Stewardship, and Leadership through Horsemanship*



The United States Pony Clubs, Inc.  
4041 Iron Works Parkway  
Lexington, KY 40511  
(859) 254-7669  
[www.ponyclub.org](http://www.ponyclub.org)

# Table of Contents



## BADGES TO EARN:

## PAGE:

Grooming .....	2
Feeding .....	3
Horse Parts .....	4, 5
Tack .....	6, 7, 8
Health Care .....	9
Shoeing .....	10, 11
Boots and Bandages .....	12
Leading .....	13
Turnout/Attire .....	14
Stable Management .....	15
Land Conservation .....	16
Breeds .....	17
Conformation .....	18
Conditioning .....	19
Travel Safety .....	20

# Grooming

## OBJECTIVE:

To be able to properly groom a mount in safe manner.



GROOMING TOOL:	USED FOR:	HOW TO USE:

### How to tie a Quick Release Knot:

<b>Badge achieved on:</b> _____
<b>Awarded by:</b> _____

# Feeding

## OBJECTIVE:

To be able to correctly and safely water and feed a balanced diet.

## How To Give a Treat:

## Give The Rules for Feeding:

- 1.
- 2.
- 3.
- 4.
- 5.
- 6.
- 7.
- 8.
- 9.
- 10.

## How to Feed:

Water

Grain

Hay



## Give Examples of Types of Feed:

**Badge achieved on:**

---

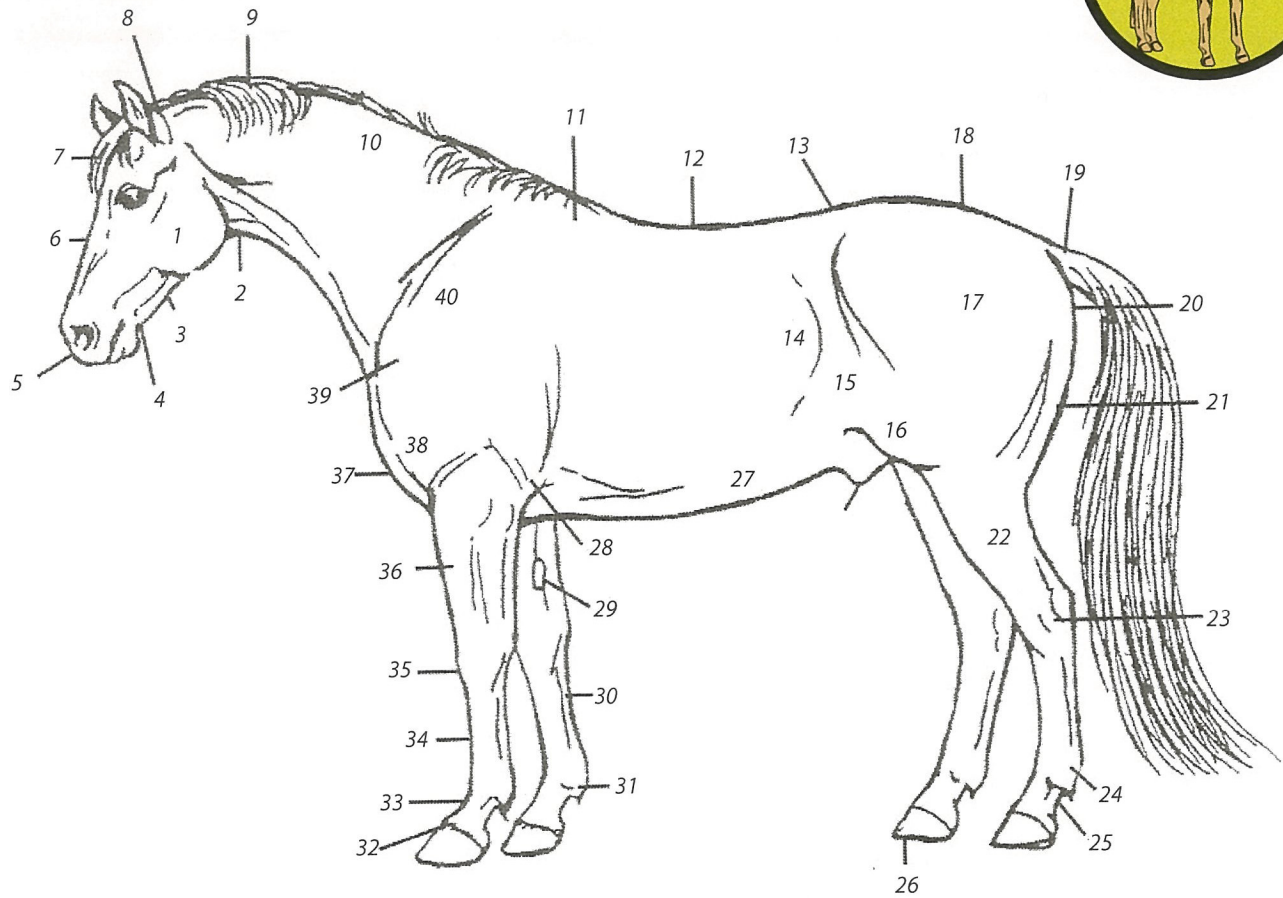
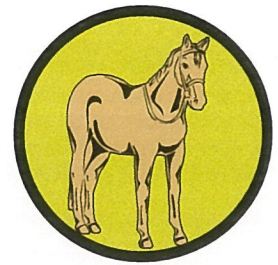
**Awarded by:**

---

# Horse Parts

## OBJECTIVE:

To be able to properly identify the parts of a mount and to properly describe a mount's markings, coloring, and height.

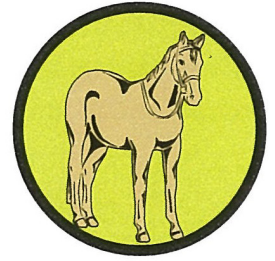


### Name the Parts of a Mount:

- |     |     |     |
|-----|-----|-----|
| 1.  | 12. | 24. |
| 2.  | 13. | 25. |
| 3.  | 14. | 26. |
| 4.  | 15. | 27. |
| 5.  | 16. | 28. |
| 6.  | 17. | 29. |
| 7.  | 18. | 30. |
| 8.  | 19. | 31. |
| 9.  | 20. | 32. |
| 10. | 21. | 33. |
| 11. | 22. | 34. |
|     | 23. | 35. |

## Horse Parts, *continued*

- 36.
- 37.
- 38.
- 39.
- 40.



### **Describe the Color:**

Black:

Brown:

Bay:

Chestnut:

Grey:

Roan:

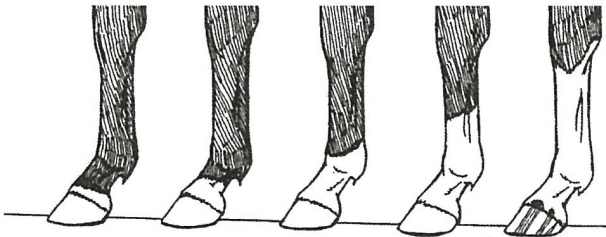
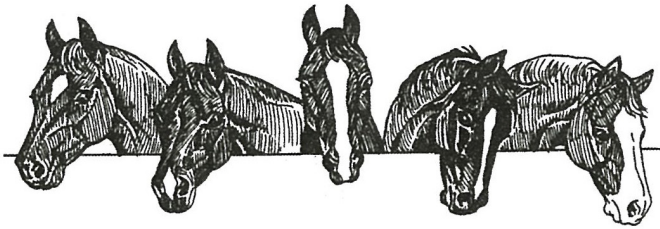
Dun:

Palomino:

Pinto:

Appaloosa:

### **Name the Markings:**



### **Measuring a Mount:**

Hand = \_\_\_\_\_ inches

Small Pony = \_\_\_\_\_ hands and under

Medium Pony = \_\_\_\_\_ to \_\_\_\_\_ hands

Large Pony = \_\_\_\_\_ to \_\_\_\_\_ hands

Horse = \_\_\_\_\_ hands and over

**Badge achieved on:**

\_\_\_\_\_

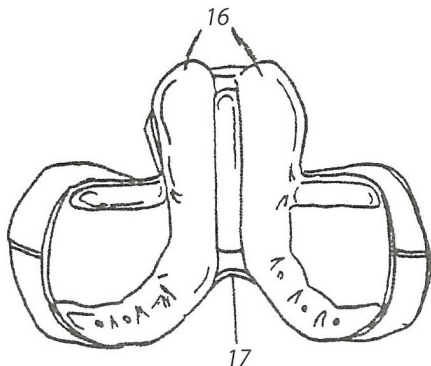
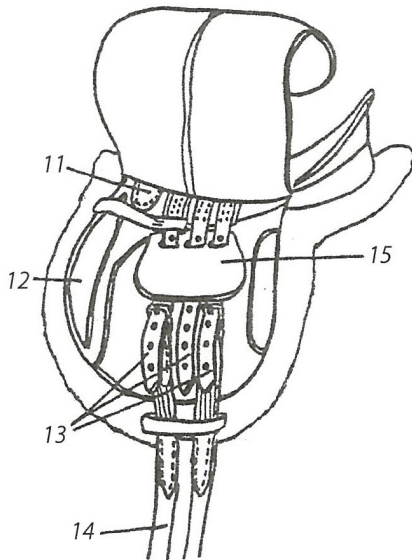
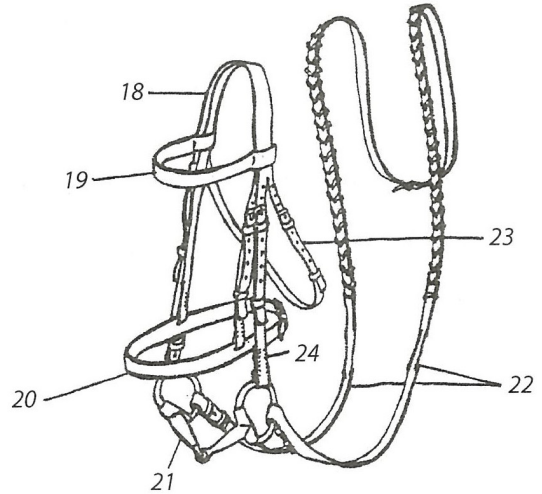
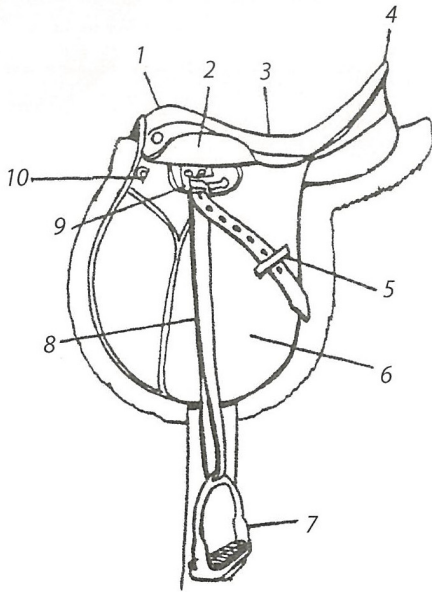
**Awarded by:**

\_\_\_\_\_

# Tack

## OBJECTIVE:

To be able to properly identify the parts of a bridle and saddle and to safely tack and untack a mount.



### Name the Parts of the Saddle and Bridle:

- 1.
- 2.
- 3.
- 4.
- 5.
- 6.
- 7.
- 8.
- 9.
- 10.
- 11.
- 12.
- 13.
- 14.





- 15.
- 16.
- 17.
- 18.
- 19.
- 20.
- 21.
- 22.
- 23.
- 24.



**Saddling:** (fill in the blank)

Put the saddle pad on in \_\_\_\_\_ of the \_\_\_\_\_ and slide \_\_\_\_\_, so the hair is \_\_\_\_\_.

Set the saddle on the \_\_\_\_\_. The saddle should be sitting in the \_\_\_\_\_ below the pony's \_\_\_\_\_.

Go to the pony's right (off) side and fasten the \_\_\_\_\_. Buckle the girth to the \_\_\_\_\_ and billets, about \_\_\_\_\_ up.

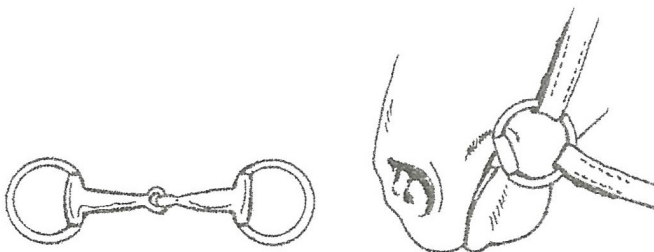
Go to the pony's left (near) side and fasten the \_\_\_\_\_. Bring the \_\_\_\_\_ under the buckle to the \_\_\_\_\_ and \_\_\_\_\_ and \_\_\_\_\_ billets.

Tighten the \_\_\_\_\_ and check it by slipping your \_\_\_\_\_ under it just below the \_\_\_\_\_.

Stretch the pony's \_\_\_\_\_.

**Why Clean Tack:**

- 1.
- 2.
- 3.

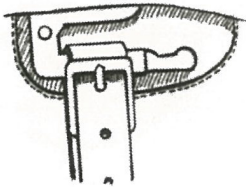


**Bits:** (fill in the blank)

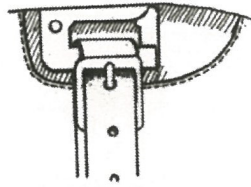
A snaffle bit must rest \_\_\_\_\_ in the pony's \_\_\_\_\_. A properly fitted snaffle should make \_\_\_\_\_.

*Continued*

**Safety Stirrup Bars:**



SAFE: Stirrup Bar open



DANGER! Stirrup bar closed



**Bridling:** (circle True or False)

- T or F Before putting the bridle on, the noseband and throatlash should be unbuckled.
- T or F It's okay for the pony to be loose when bridling.
- T or F The reins should go over the pony's head.
- T or F When using the over the poll method to bridle, your right hand holds the crownpiece and the left hand holds the bit.
- T or F When using the arm around under head method to bridle, your right hand holds the bit and the left hand holds the side of the bridle.
- T or F The throatlash should be buckled tightly.
- T or F The forelock should be over the browband.
- T or F If the pony is hard to bridle, you should sit on it's neck.
- T or F If the pony is hard to bridle, you should get help.

**Unsafe Tack:**



UNSAFE: Worn-out elastic girth ends



UNSAFE: Broken hook stud, loose keeper



Stitching coming loose



Unsafe billets: Stretched-out holes, cracks and dry rot; stitching coming loose



Dry, cracked and weakened leather, showing dry rot

**Badge achieved on:**

\_\_\_\_\_

**Awarded by:**

\_\_\_\_\_

# Health Care

## OBJECTIVE:

To be able to describe a healthy mount and one that needs help. Understand the role of a veterinarian, and regular health maintenance of a mount.



### What Is a Veterinarian:

### Signs of a Healthy Mount:

- 1.
- 2.
- 3.
- 4.
- 5.
- 6.
- 7.
- 8.
- 9.
- 10.
- 11.

### Why De-Worm

- 1.
- 2.

### When to Seek Help for a Sick or Injured Mount:

- 1.
- 2.
- 3.
- 4.
- 5.
- 6.
- 7.
- 8.

### List the Types of Common Vaccinations

- 1.
- 2.
- 3.
- 4.

<b>Badge achieved on:</b> _____
<b>Awarded by:</b> _____

# Shoeing

## OBJECTIVE:

To be able to demonstrate a knowledge of healthy hoof maintenance and its importance.

### How to Pick Out a Hoof:



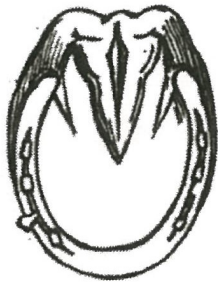
### Signs That a Hoof Needs Shoeing:



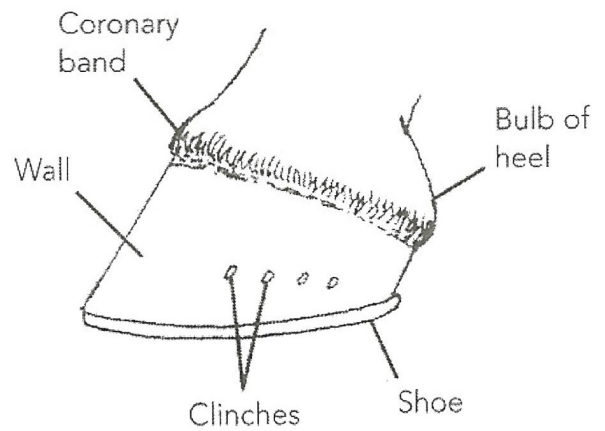
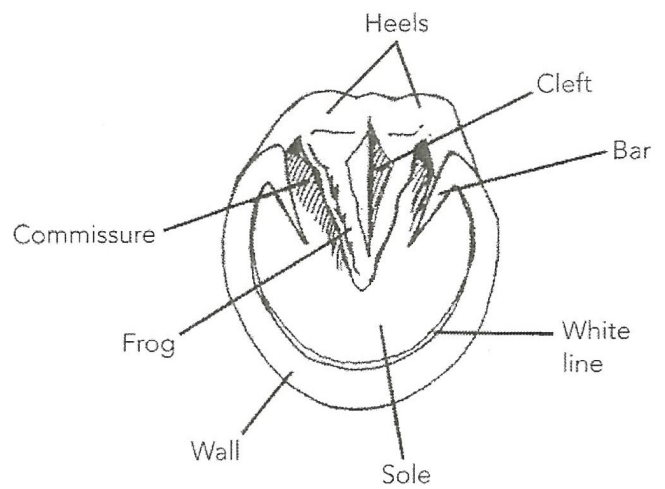
Long toe, low heel, cracked and broken hoof



Long toe, clinches risen, shoe too far forward



Shoe overgrown by foot, bent and missing nails, shoe loose



Some parts of the hoof.

# Shoeing, *continued*



## **Farrier Tools:**

Name:

Use:

---

---

---

---

---

---



## **Signs of a Newly Shod Hoof:**

## **Signs of Thrush:**

## **Why Care for Hooves:**

**Badge achieved on:**

---

**Awarded by:**

---

# Boots & Bandages

## OBJECTIVE:

To understand the protective nature of boots and bandages and how and when to apply them.



**Bandage**

**Purpose**

---

---

---

---

---

---

---

---

**Boot**

**Purpose**

---

---

---

---

---

---

---

---

### Fill in the Blanks

Shipping bandages/boots protect the \_\_\_\_\_ from the \_\_\_\_\_ to the \_\_\_\_\_ and \_\_\_\_\_. They should cover the \_\_\_\_\_ and the \_\_\_\_\_, the \_\_\_\_\_ and \_\_\_\_\_ joint, and the \_\_\_\_\_ up to the bottom of the \_\_\_\_\_ or \_\_\_\_\_.

**Badge achieved on:**

---

**Awarded by:**

---

# Leading



## OBJECTIVE:

To be able to properly and safely halter, lead and tie a mount.



### *How to Approach a Mount from the Front:*

- 1.
- 2.
- 3.

### *How to Tie a Quick Release Knot:*

### *How to Approach a Mount from the Rear:*

- 1.
- 2.
- 3.

### *What is a Safe Area to Tie a Mount:*

- 1.
- 2.
- 3.

<b>Badge achieved on:</b> _____
<b>Awarded by:</b> _____

# Turnout/Attire

## OBJECTIVE:

*To be able to properly present oneself and his/her mount.*



## *Everyday Attire:*

## *Informal Attire:*

## *Formal Attire:*

## *Places to Check for Dirt on a Mount:*

- 1.
- 2.
- 3.
- 4.
- 5.
- 6.

**Badge achieved on:**

---

**Awarded by:**

---



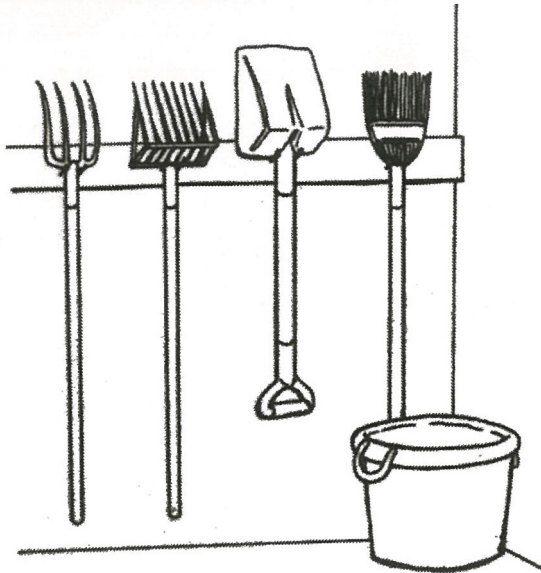
# Stable Management

## OBJECTIVE:

To be able to properly and safely care for a mount in a stall.



## Name the Barn Tools:



## How to Hang a Hay Net:

## List of Information to be Found on a Stall Card:

- 1.
- 2.
- 3.
- 4.
- 5.
- 6.
- 7.
- 8.
- 9.
- 10.
- 11.
- 12.
- 13.
- 14.

## Steps in Cleaning a Stall:

- 1.
- 2.
- 3.
- 4.
- 5.
- 6.

## How to Hang Water and Grain Buckets:

Badge achieved on:

\_\_\_\_\_

Awarded by:

\_\_\_\_\_

# Land Conservation

## OBJECTIVE:

To help preserve the right to ride on public land by being courteous and grateful to landowners.



**Write Thank-You Notes to All Landowners Who Allow You to Ride on Their Land.**

**A great place to find out where you can volunteer and be active in preserving your ability to ride on public land is:**

## **Riding on Privately-owned Land**

*(circle true or false)*

- T or F Always ask before riding on anyone's land.
- T or F Treat the land and the landowners with respect. Be polite to hikers, bikers, and other trail users, and especially landowners.
- T or F You should follow your own rules when riding on somebody else's land.
- T or F You should pick up and carry out your trash and any trash you see, clean up manure after your pony, and if you trailer in, clean up around your trailer.
- T or F The landowner should fix any damage you or your pony cause.
- T or F You should be polite, pleasant, and helpful, and be a good representative of Pony Club.

**Badge achieved on:**

\_\_\_\_\_

**Awarded by:**

\_\_\_\_\_

# Breeds

## OBJECTIVE:

To be able to properly identify different horse, pony, and draft breeds.



### Horse Breeds:

(Identify a common horse sport for two [2])

- 1.
- 2.
- 3.
- 4.
- 5.
- 6.

### Pony Breeds:

(Identify a common horse sport for one [1])

- 1.
- 2.
- 3.
- 4.
- 5.

### Draft Breeds:

(Identify a common horse sport for one [1])

- 1.
- 2.
- 3.
- 4.
- 5.

### Fill in the Blanks:

Most horses of a particular breed are \_\_\_\_\_  
(which means their \_\_\_\_\_ and \_\_\_\_\_  
are both of the same breed).

**Badge achieved on:**

\_\_\_\_\_

**Awarded by:**

\_\_\_\_\_

# Conformation

## OBJECTIVE:

To be able to properly identify conformation points and faults in a mount as well as describe a strange mount to another person.

## Fill in the Blanks:

A pony's head should be wide at the \_\_\_\_\_, with large \_\_\_\_\_, large, kind \_\_\_\_\_, and a pleasant \_\_\_\_\_.

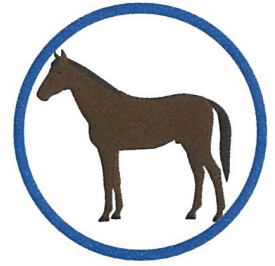
A good neck is medium \_\_\_\_\_, and slightly \_\_\_\_\_, bending smoothly into \_\_\_\_\_ of medium height.

A good back is \_\_\_\_\_ and well \_\_\_\_\_ blending smoothly into a wide, well muscled \_\_\_\_\_ and medium height \_\_\_\_\_.

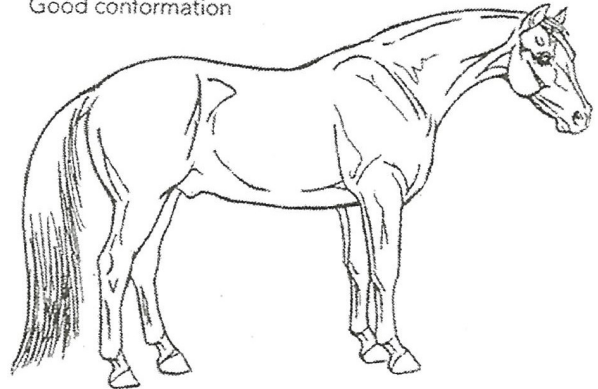
A good shoulder is \_\_\_\_\_ (from the top of the \_\_\_\_\_ to the point of the \_\_\_\_\_) and sloping.

The pasterns are like \_\_\_\_\_ absorbers, so they must be \_\_\_\_\_ and \_\_\_\_\_ with \_\_\_\_\_ length and slope.

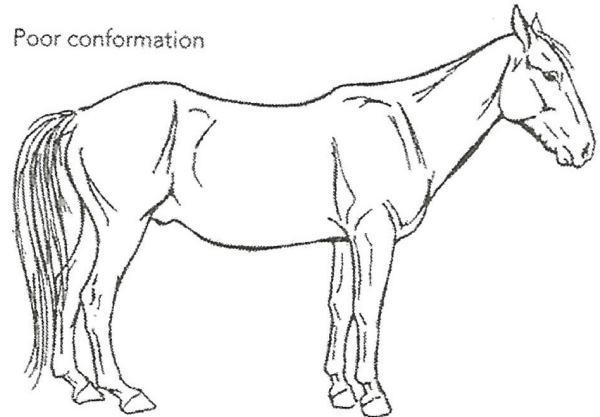
## Describe your own pony to somebody else:



Good conformation



Poor conformation



Badge achieved on:

\_\_\_\_\_

Awarded by:

\_\_\_\_\_

# Conditioning

## OBJECTIVE:

To be able to properly condition a mount for the work asked of him or her.



## TPR Stands for:

T \_\_\_\_\_

P \_\_\_\_\_

R \_\_\_\_\_

## Describe Resting Vital Signs for a Mount:

### Fill in the Blanks:

If a pony is not properly cooled out, he may get \_\_\_\_\_, develop \_\_\_\_\_, or even \_\_\_\_\_.

He should always be put away \_\_\_\_\_, \_\_\_\_\_, and \_\_\_\_\_ after a ride.

## Condition Means:

Badge achieved on:

\_\_\_\_\_

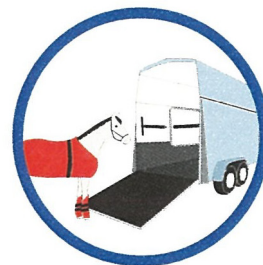
Awarded by:

\_\_\_\_\_

# Travel Safety

## OBJECTIVE:

To be able to properly travel with a mount in a safe manner.



## Rules for Riding in a Ring:

- 1.
- 2.
- 3.
- 4.
- 5.
- 6.
- 7.
- 8.
- 9.
- 10.
- 11.

## Fill in the Blanks:

When trailering, the trailer and tow vehicle must be \_\_\_\_\_, \_\_\_\_\_ and properly \_\_\_\_\_.

## Describe Equipment Needed for Trailering:

## Rules for Riding on the Road

- 1.
- 2.
- 3.
- 4.

<b>Badge achieved on:</b> _____
<b>Awarded by:</b> _____



*Sportsmanship, Stewardship, and Leadership through Horsemanship*



The United States Pony Clubs, Inc.  
4041 Iron Works Parkway  
Lexington, KY 40511  
(859) 254-7669  
[www.ponyclub.org](http://www.ponyclub.org)